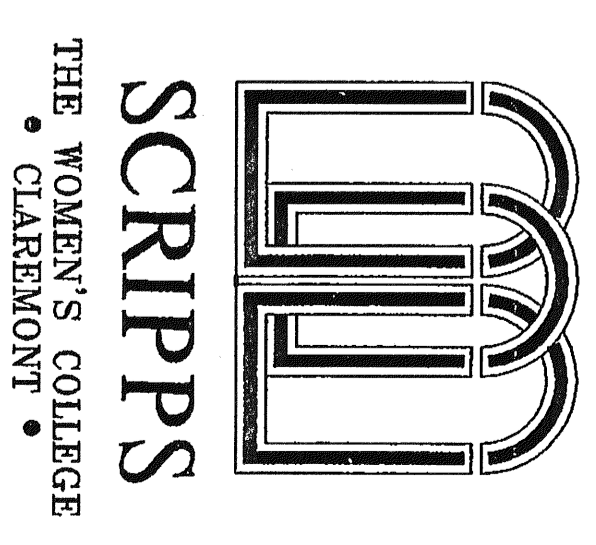


CONSULTANT



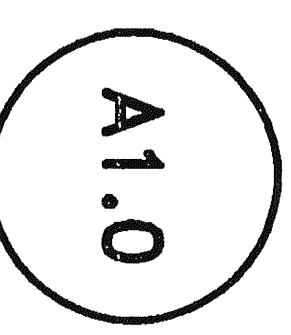
PROJECT
 SCRIPPS COLLEGE
 BALCH HALL
 ELEVATOR AND
 RESTROOMS REMODEL
 PROJECT LOCATION
 1030 COLUMBIA AVENUE
 CLAREMONT, CA 91711

ISSUANCES
 02-21-07 PLAN CHECK SUBMITTAL
 4 BLD 01
 REVISIONS

TITLE
 BASEMENT
 DEMOLITION PLAN

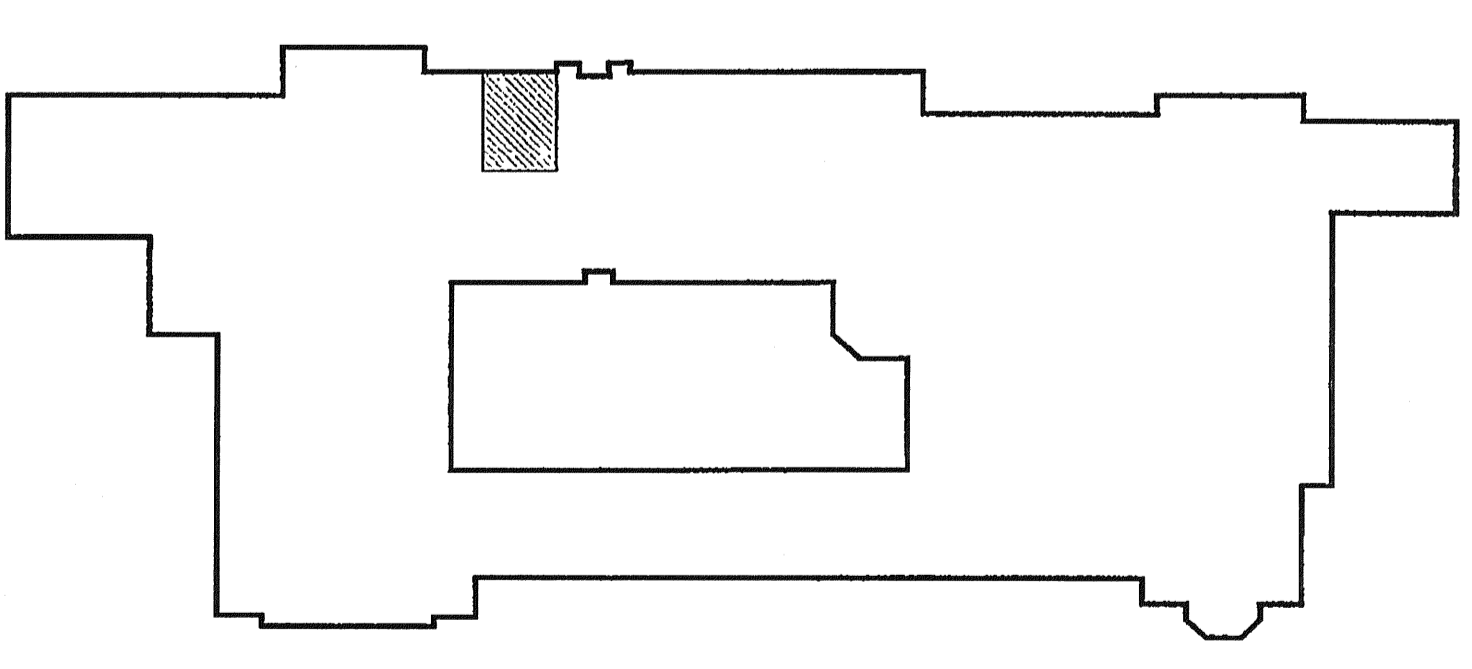
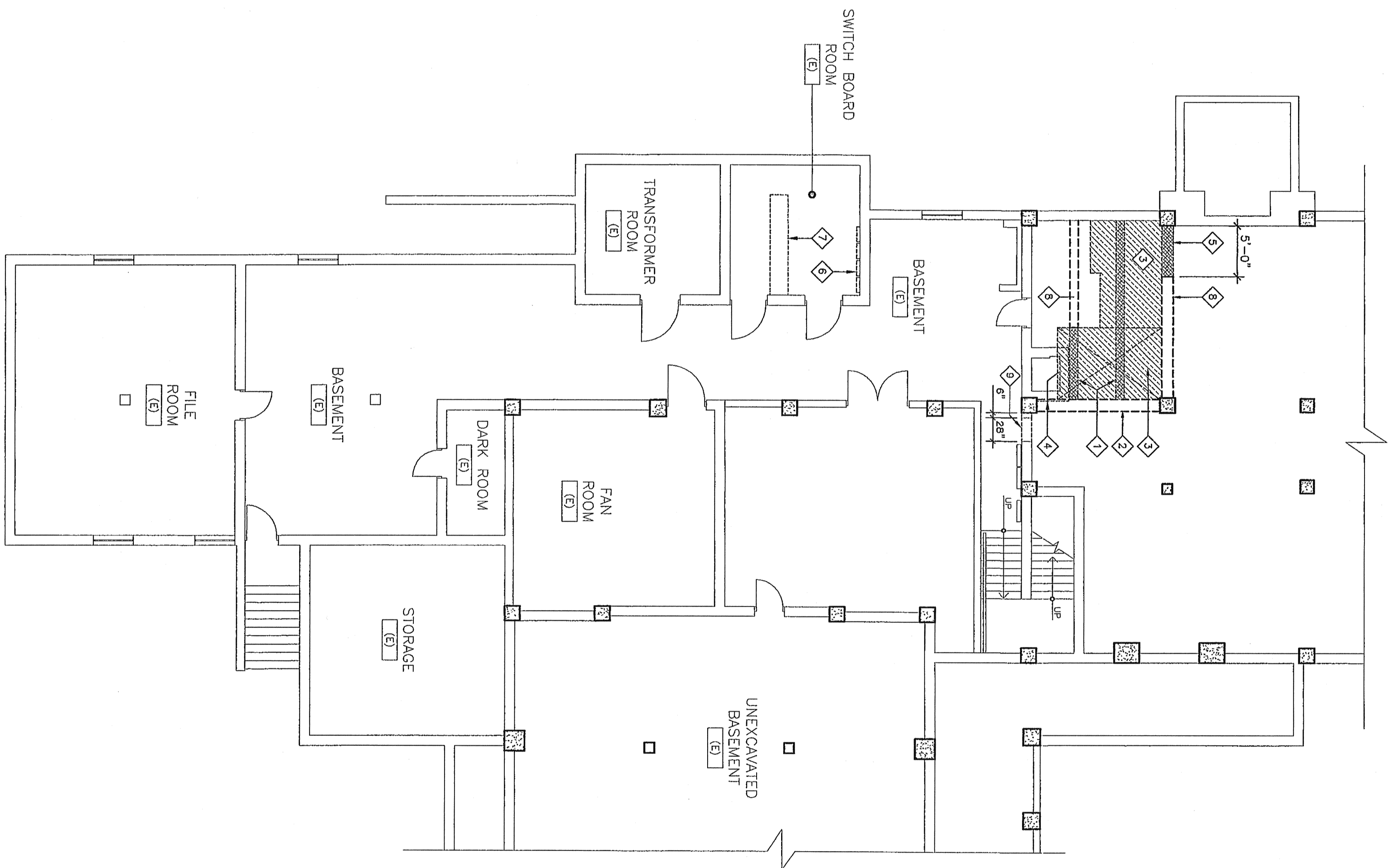
W/REVISION FROM
 KMB 0 9 2007
 REVISIONS

SCALE
 1/8" = 1'-0"
 DATE
 JANUARY 2006
 JOB NO.
 240906



PLAN LEGEND
 --- EXISTING WALLS TO REMAIN
 --- EXISTING WALLS TO BE REMOVED
 --- EXISTING DOOR AND FRAME TO BE REMOVED
 [Hatched Area] AREA OF (E) SLAB ABOVE TO BE REMOVED

DEMOLITION NOTES
 1 REMOVE PORTIONS OF (E) CONCRETE BEAMS AS SHOWN ON THE PLAN. REFER TO STRUCTURAL DRAWINGS.
 2 PROJECT IN PLACE (E) CONCRETE BEAM REQUIRED TO ALLOW CLEARANCE FOR NEW STAIRS TO EXISTING SWIMMING.
 3 REMOVE (E) FLOOR SLAB ABOVE. PREPARE FOR (N) FLOOR SLAB TO BE LAINING.
 4 REMOVE PORTION OF (E) BRICK INCINERATOR WALLS AND FOOTING.
 5 MODIFY PORTION OF (E) CONC. BEAM AS REQUIRED TO ALLOW CLEARANCE FOR NEW STAIRS TO EXISTING SWIMMING.
 6 REMOVE AND REPOSE (E) FAN COIL UNITS TO EXISTING SWIMMING.
 7 REMOVE PORTION OF (E) ABANDONED HIGH VOLTAGE WIRE WORK ON ELECTRICAL PLANS.
 8 PORTION OF (E) BEAM TO REMAIN.
 9 REMOVE PORTION OF (E) CONC. WALL 24" X 40" HIGH FOR NEW 24" X 36" ACCESS PANEL AND FRAME.



BASEMENT DEMOLITION PLAN
 1/8"=1'-0"