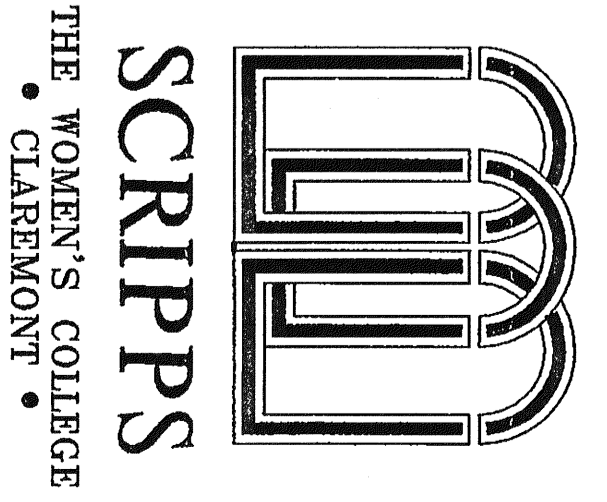


CONSULTANT



PROJECT
 SCRIPPS COLLEGE
 BALCH HALL
 ELEVATOR AND
 RESTROOMS REMODEL
 PROJECT LOCATION
 1030 COLUMBA AVENUE
 CLAREMONT, CA 91711

ISSUANCES
 02-21-07 PLAN CHECK SUBMITTAL
 # E.D. SBT

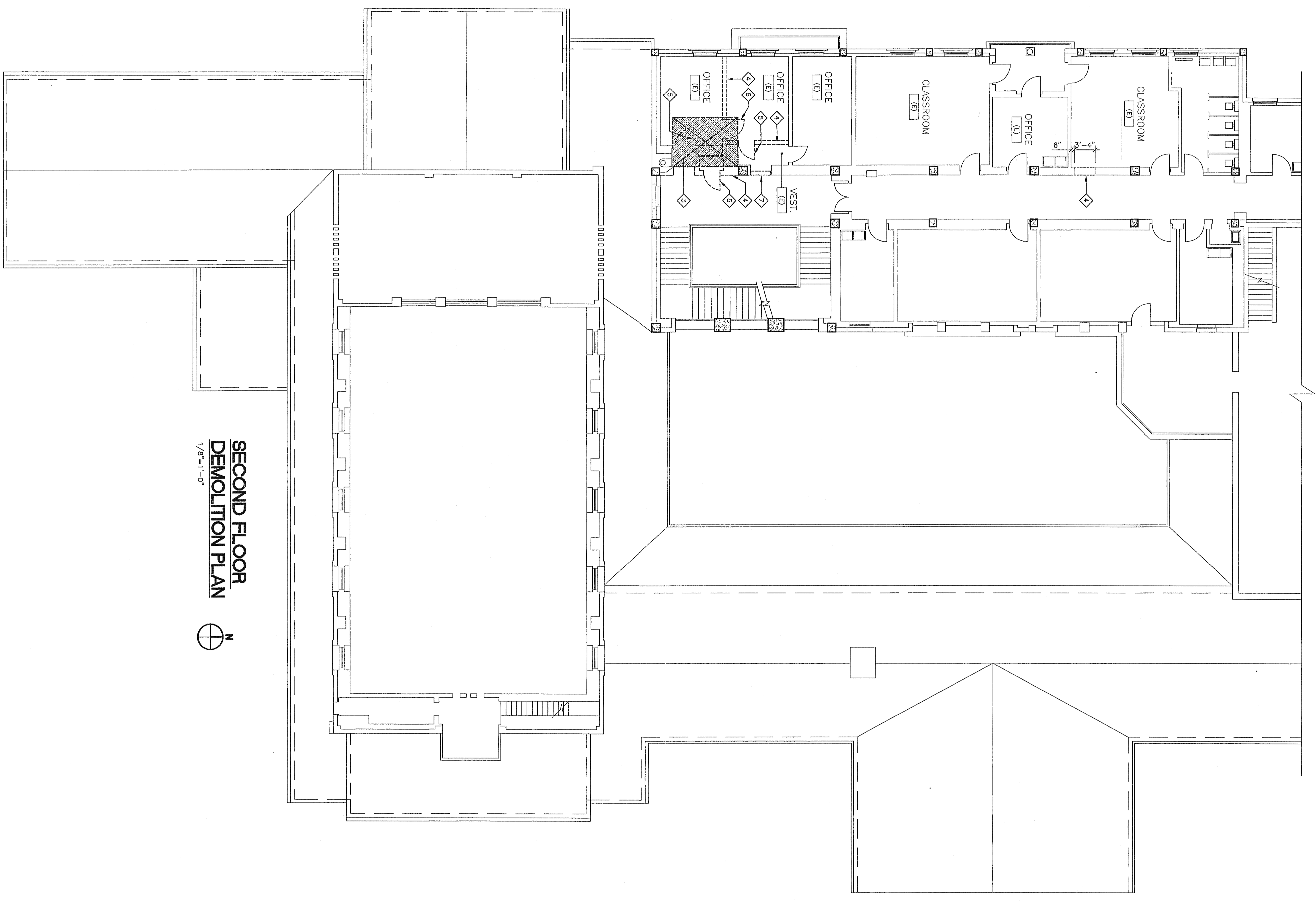
REVISIONS

TITLE
 SECOND AND THIRD
 FLOOR DEMOLITION
 PLANS

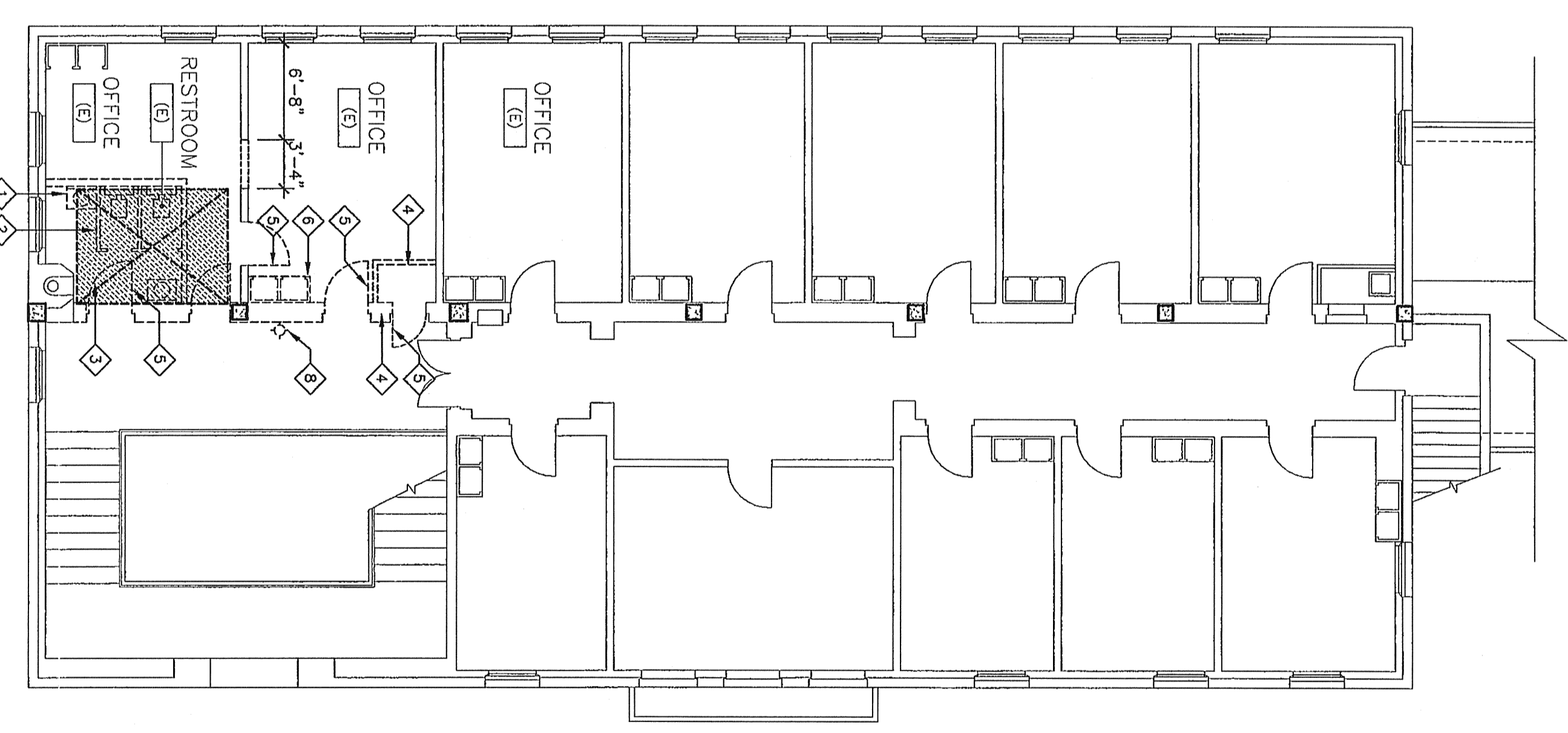
WESLEY HOFF
 MAY 09 2007
 REVIEWED

SCALE
 1/8" = 1'-0"
 DATE
 JANUARY 2006
 JOB NO.
 240906

A1.2



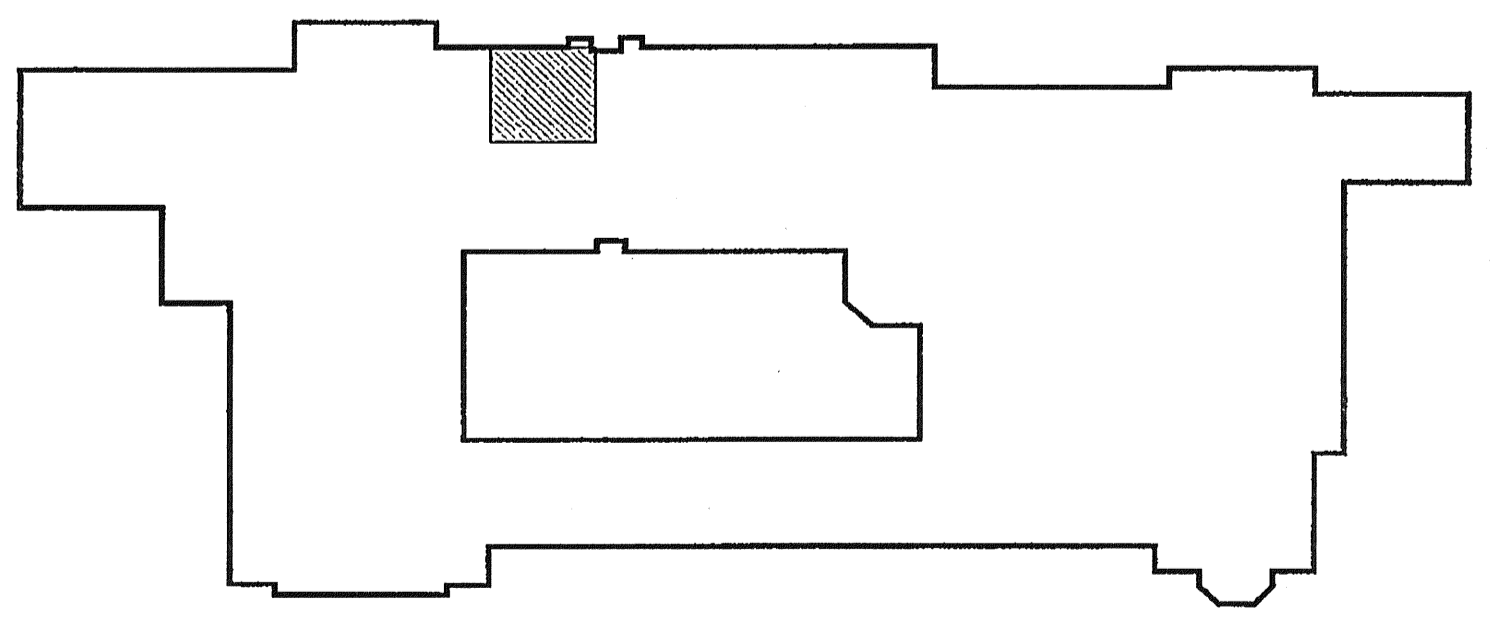
SECOND FLOOR
 DEMOLITION PLAN
 1/8"=1'-0"



THIRD FLOOR
 DEMOLITION PLAN
 1/8"=1'-0"

- PLAN LEGEND**
- EXISTING WALLS TO REMAIN
 - EXISTING WALLS TO BE REMOVED
 - - - EXISTING DOOR AND FRAME TO REMAIN
 - - - EXISTING DOOR AND FRAME TO BE REMOVED
 - - - EXISTING DOOR AND FRAME TO BE REMOVED, SILL, CASE, AND HARDWARE AS DIRECTED BY OWNER
 - ▨ AREA OF (E) SLAB TO BE REMOVED

- DEMOLITION NOTES**
- 1 REMOVE ALL (E) CEILING, WALL AND FLOOR FINISHES AND PROVIDE ALL (E) PARTITIONS TO REMAIN FOR NEW FINISH SCHEDULE.
 - 2 REMOVE EXISTING PLUMBING FIXTURES, TOILET PARTITIONS AND ACCESSORIES IN THEIR ENTIRETY.
 - 3 SAWCUT AND REMOVE A PORTION OF (E) FLOOR SLAB FOR SWAYOUT REQUIREMENTS TO STRUCTURAL DRAWINGS.
 - 4 REMOVE PORTION OF (E) WALL AS INDICATED OR DIMENSIONED ON PLAN.
 - 5 REMOVE (E) DOOR AND FRAME, CONTRACTOR SHALL STORE (E) DOOR, FRAME AND HARDWARE AS DIRECTED BY OWNER.
 - 6 REMOVE (E) CASEWORK AS SHOWN.
 - 7 REMOVE (E) WOOD DOOR FRAME AND TRIMMING PANEL, PREPARE WALL SURFACES FOR NEW RUBBER FINISH TO MATCH EXISTING.
 - 8 REMOVE (E) WALL MOUNTED LIGHT FIXTURE, RE-INSTALLATION AFTER ELEVATOR INSTALLATION.



KEY PLAN